

# Payroll Giving

Naumi Airport Hotel - Auckland, 27 August 2019

# What is payroll giving?

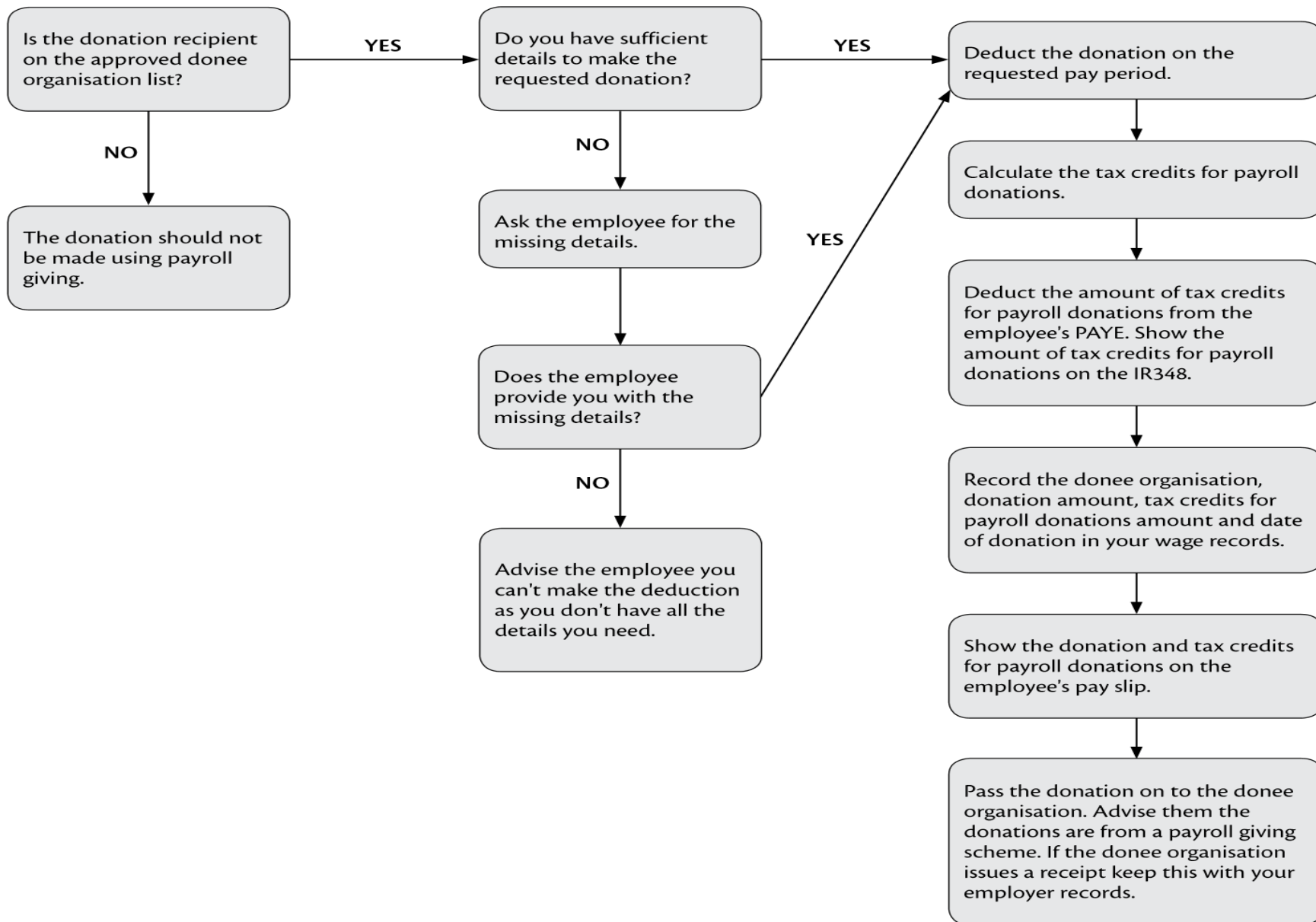
---

- A voluntary scheme offered by employers
- Employees can donate to charities and similar organisations directly from their pay.

# How payroll giving works

---

- Employee choices – who, how much, frequency?
- Is the organisation approved?
- myIR
- The employer passes the donation onto the organisation
- Employee tax credit



# Why use payroll giving?

---

- Donations are made directly from your pay
- Eliminates receipts and rebate claims
- No automatic payments or direct debits
- Workplace encouragement
- Support employees
- Mutual benefit

# For more information

---

- Visit <https://www.ird.govt.nz/roles/employers/payroll-giving-for-my-employees>
- Payroll giving – IR617
- Get in touch with Community Compliance



# Questions